

# Solifiore: Gymea

## Assembly/Operating Instructions

**KING**<sup>®</sup>  
L I V I N G

One person is required for safe assembly/operation.

### Opening Boxes

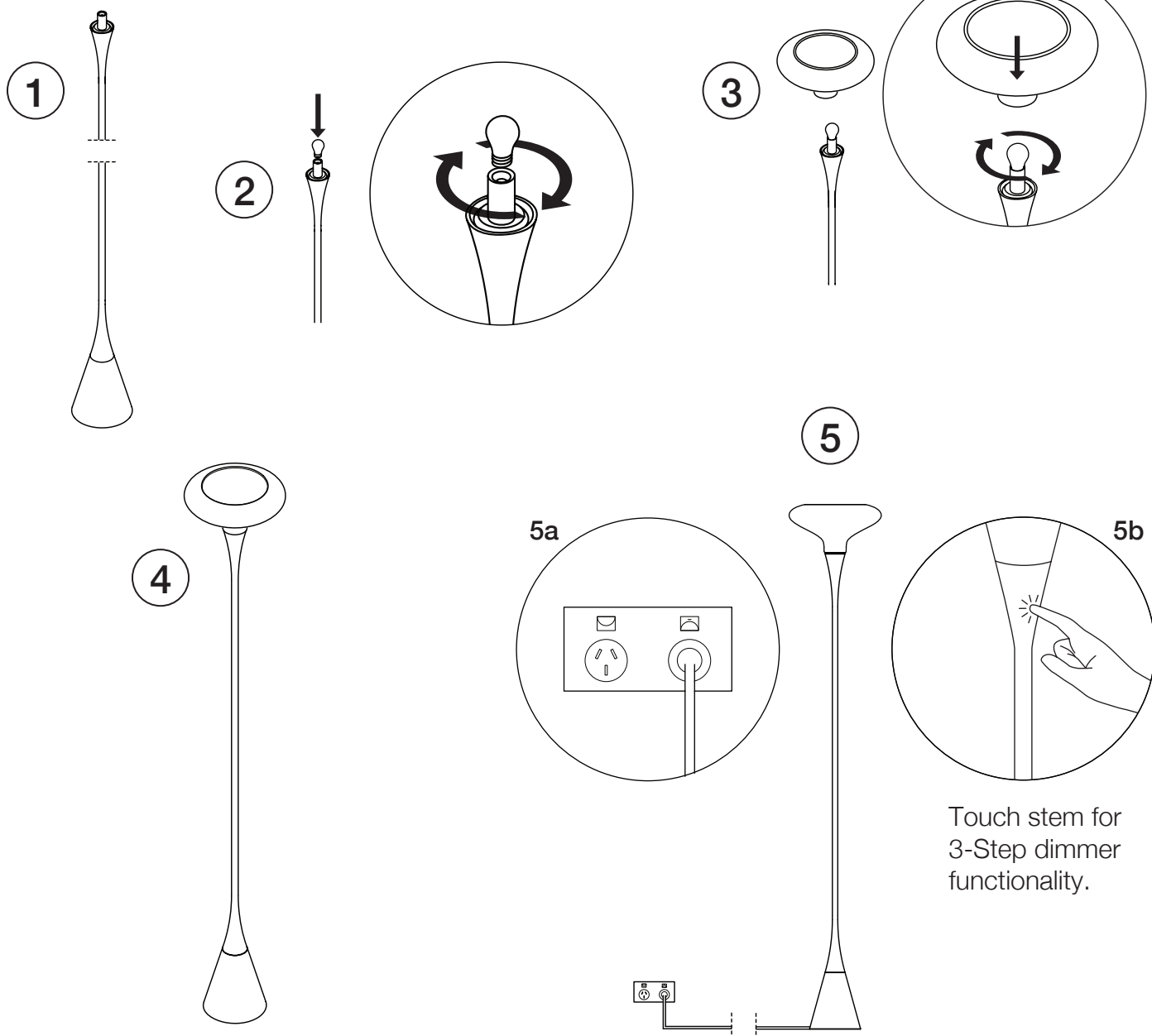
DO NOT use a knife to open the King Living boxes as you may damage your furniture.

Peel off the tape, then lift & separate the cardboard flaps to open.

Assemble your furniture by following the steps below.

### **WARNING!**

Do NOT change light bulbs while lamp is plugged into power source.



# Specifications

## GENERAL

**Mounting:** Floor

**Environment:** Indoor

**Finishes:**

*Base:* Honed Blackened Concrete

*Stem:* Black Nickel

*Glass Shade:* Hand Blown Glass

**Weight:** 6.5kg

**Technical Description:** Floor lamp providing warm controlled light through its touch dimming function. Base is honed blackened concrete with black nickel stem. Glass shades available in four colours.

**Colours:** Honed Blackened Concrete Base with Black Nickel Stem complete with coloured glass shade in either Amber, Ochre Red, Olive Green or Smoke.

**Light Source:** E14 40W Max.

[Recommended Colour Temperature – Warm White 3000K]

## ELECTRICAL

**Emergency:** N/A

**Switching:** Touch dimming functionality

**Voltage:** 220–240V

**Power:** Max. 40W

**Supply Included:** N/A

# Warning

## WARNING

- The power supply must be switched off whenever installing and/or whenever acting on the appliance.
- The external flexible cable or cord of this luminaire cannot be replaced; if the cord is damaged, the luminaire shall be destroyed.
- Modification to this luminaire may compromise its safety and cause it to become dangerous. KING LIVING will void remaining warranty and declines all responsibility for products that are modified
- For controllable luminaire: lamps incorporated with dimmer circuit protected by reinforced insulation.
- Should the external trailing cable be damaged, cease use immediately and have an authorised representative of KING LIVING replace this component.
- NB: slowly screw in the diffuser taking care not to force or over tighten. Excessive tightening may cause difficulties or damage to; The diffuser and its associated components and/or difficulties removing the shade.

**KING LIVING CUSTOMER CARE:** [kingliving.com/support](http://kingliving.com/support)